

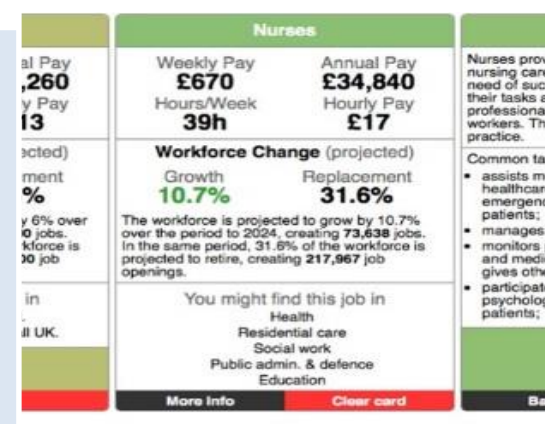
LMI for All: A Careers Database for the UK

widening access to high quality labour market information for careers

ACCESSING DATA IN LMI FOR ALL



Develop a web interface or mobile application that uses the API to access the LMI for All database



Embed Careerometer, a free widget, into your own website



Explore a third party website or application that uses LMI for All data

KEY CHARACTERISTICS

- An online data portal www.lmiforall.org.uk
- Brings together existing national sources of high quality, reliable LMI
- Developed by IER (University of Warwick) & Pontydyddu
- Funded by Department for Education
- Data from official sources (e.g. ONS, UKCES, DWP, HESA, O*NET)
- Data on detailed occupations at SOC2010 4-digit, range of indicators
- Piloted in 2012, full project status

DRIVERS & OBJECTIVES

To optimise access to, and use of, core national data sources that can be used by developers to create websites and applications to support individuals make better decisions about learning and work

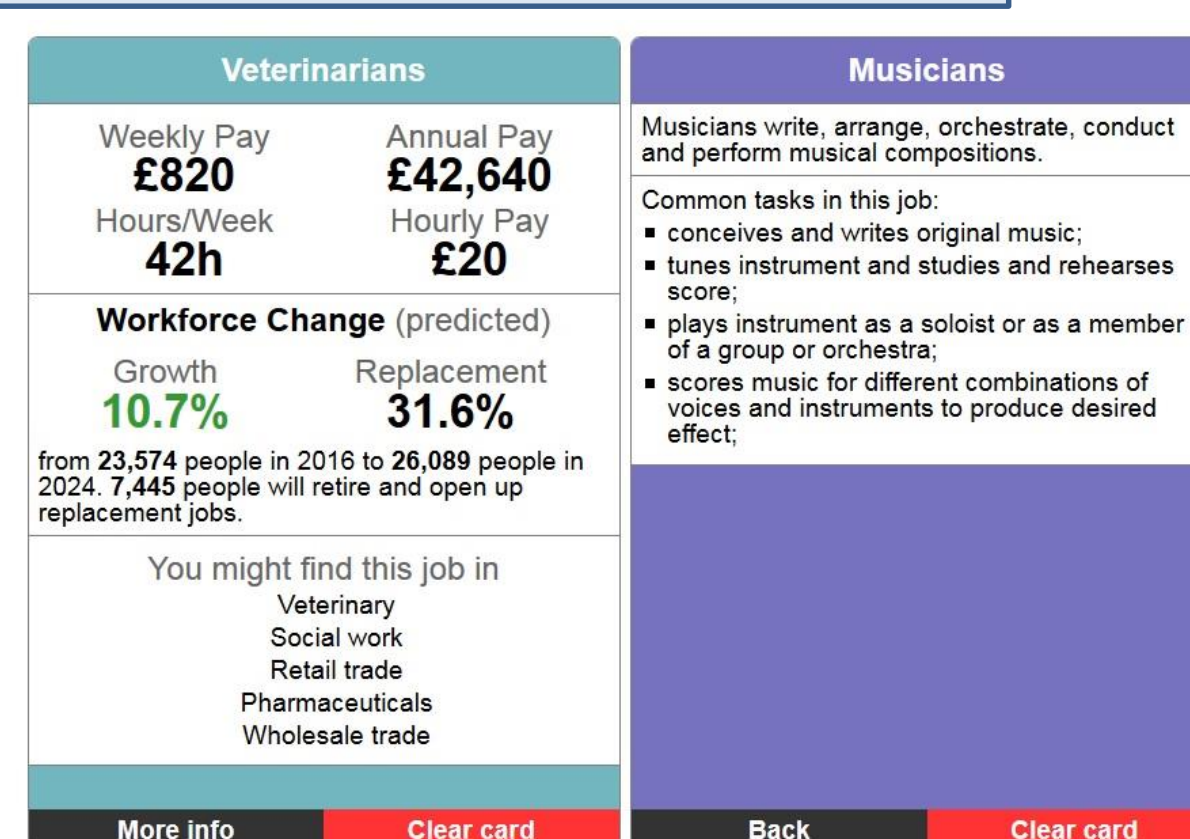
Supports wider government agenda to encourage use and re-use of government data sets

INNOVATIVENESS AND SUCCESS FACTORS

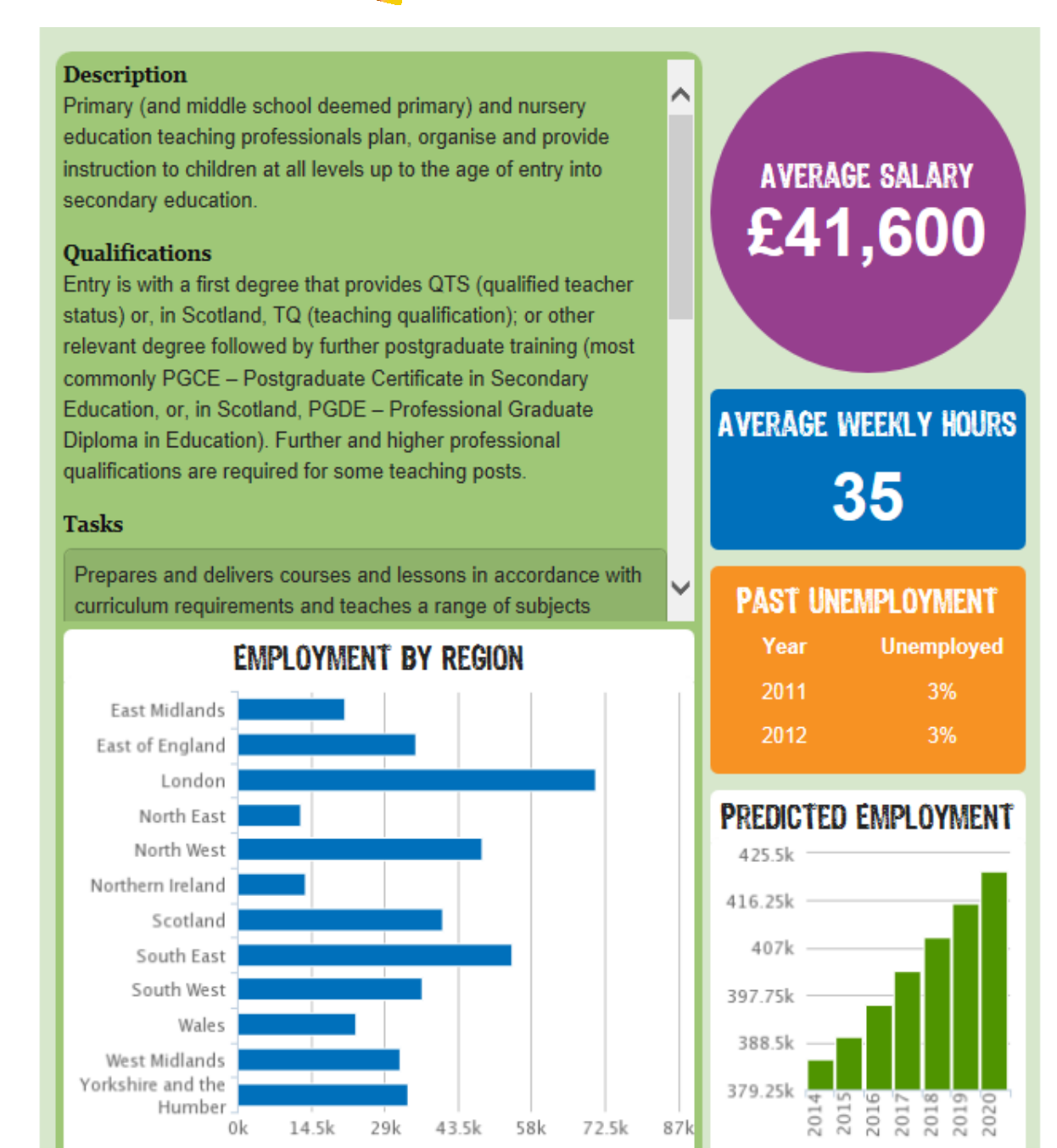
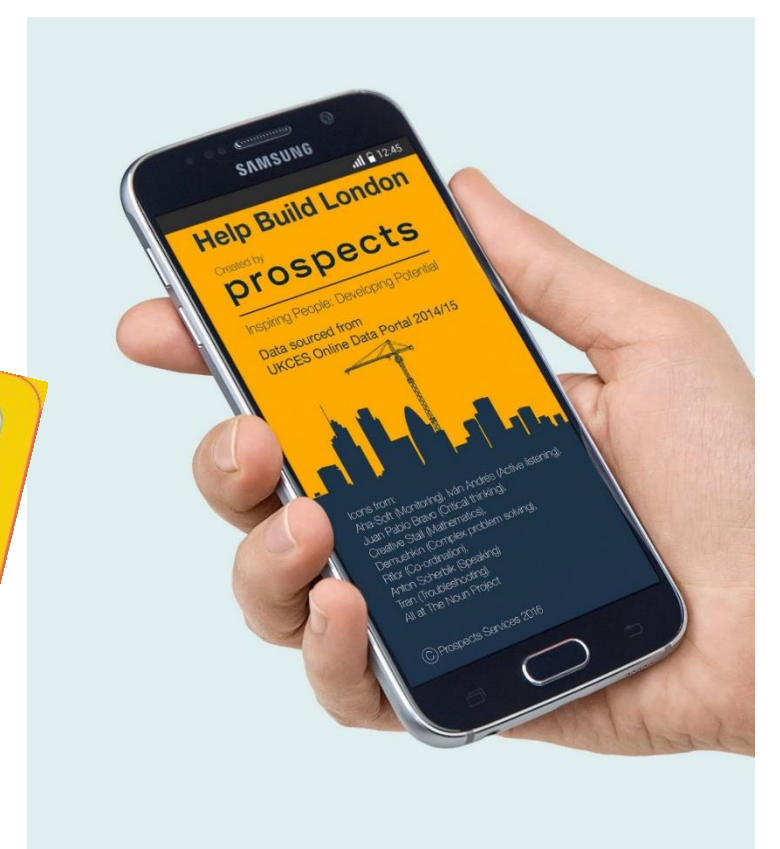
- A single access point for multiple, high quality sources of LMI
- Dynamic and iterative development process
- Open, free access allows software developers to extract LMI using the API to create apps or websites
- Creative designers can draw upon robust data to create a variety of useful, eye-catching LMI sources
- Used by a wide range of stakeholders in the careers field across the UK

IDENTITY

What is LMI for All?



Examples of how LMI for All is being used



MAIN IMPACTS

- Identified in the Careers Strategy (2017): 'provides one place to access multiple sources of robust LMI' (p.32).
- Careerometer (LMI for All widget) embedded in over 60 websites
- Current statistics from the LMI for All monitoring service show that usage is increasing
- Daily queries reach on average 800,000 per day

Current users of LMI for All include:

